



August 26, 2006  
Stanford University

### Talk Details

Talks will be 20 min – 15 min talk / 5 min Q&A

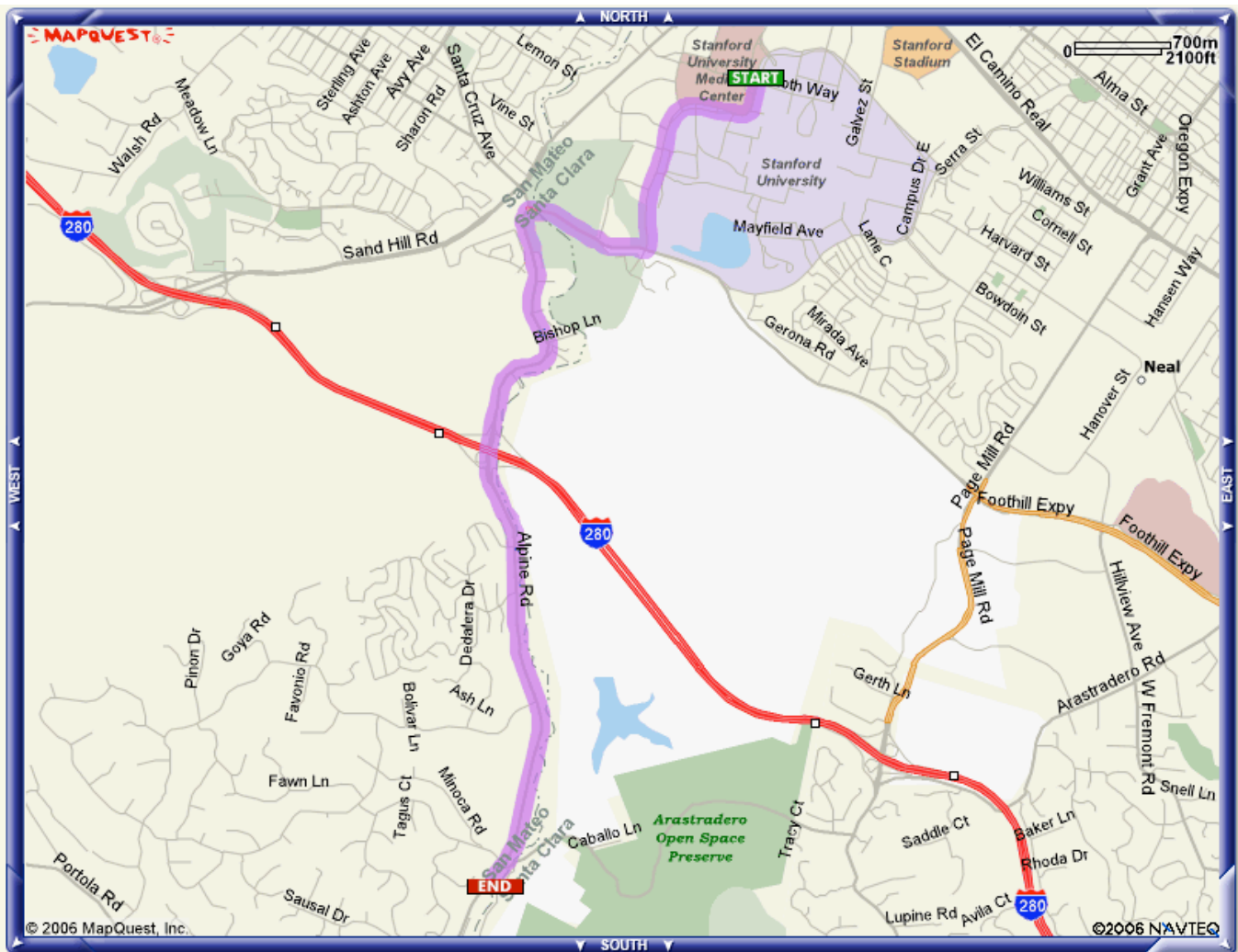
### Organizing Committee





Charan Ranganath  
Art Shimamura  
Anthony Wagner

### Acknowledgments

Partially supported by a fellowship from the Alfred P. Sloan Foundation.

### Directions to the Alpine Inn



- |   |   |           |                     |
|---|---|-----------|---------------------|
|  | <b>1:</b> Start out going SOUTH on CAMPUS DR W toward MEDICAL WAY.          | 1.0 miles | <a href="#">Map</a> |
|  | <b>2:</b> Turn RIGHT onto JUNIPERO SERRA BLVD / CR-G5.                      | 0.5 miles | <a href="#">Map</a> |
|  | <b>3:</b> Turn LEFT onto ALPINE RD.   | 3.1 miles | <a href="#">Map</a> |
|  | <b>4:</b> End at <b>3915 Alpine Rd</b><br>Portola Valley, CA 94028-8001, US |           | <a href="#">Map</a> |

**Total Est. Time:** 10 minutes    **Total Est. Distance:** 4.80 miles

<b>9:00</b>	<b>Arrival and breakfast refreshments</b>
<b>9:25-9:30</b>	<b>Opening comments</b>
<b>9:30 – 10:30</b>	<b>Talk Session 1</b>
9:30 – 9:50	Rob Blumenfeld, UC Davis <i>Dissociating item-specific and relational encoding processes</i>
9:50 – 10:10	Nicolas Davidenko, Stanford <i>A reverse distinctiveness effect in face memory</i>
10:10 – 10:30	Colleen Parks, UC Davis <i>Dual-process and unequal-variance signal detection models of recognition memory</i>
<b>10:30 – 11:30</b>	<b>Poster Session 1 (w/ refreshments)</b>
	<ul style="list-style-type: none"> <li>• Aaron Bornstein (Stanford)</li> <li>• Melina Uncapher (UC Irvine)</li> <li>• Andrew Haskins (UC Davis)</li> <li>• Heekyeong Park (UC Irvine)</li> <li>• Kaia Vilberg (UC Irvine)</li> <li>• Ellen Klostermann Wallace (UC Berkeley)</li> <li>• Nathan Clement (Stanford)</li> </ul>
<b>11:30 – 12:30</b>	<b>Talk Session 2</b>
11:30 – 11:50	Rachel Diana, UC Davis <i>The low frequency encoding disadvantage: Word frequency affects processing demands</i>
11:50 – 12:10	Jeffrey Johnson, UC Irvine <i>Recollection and the reinstatement of encoding-related neural activity</i>
12:10 – 12:30	Liz Race, Stanford <i>Electrophysiological correlates of stimulus-response learning: Effects of response repetition and response conflict</i>
<b>12:30 – 2:00</b>	<b>Lunch</b>
<b>2:00 – 3:00</b>	<b>Talk Session 3</b>
2:00 – 2:20	David Badre, UC Berkeley <i>fMRI evidence for a hierarchic organization of control in prefrontal cortex</i>
2:20 – 2:40	Daphna Shohamy, Stanford <i>Novelty differentially modulates medial temporal lobe and basal ganglia contributions to learning and transfer</i>
2:40 – 3:00	Brad Buchsbaum, UC Berkeley <i>Repetition suppression and reactivation in short-term recognition memory</i>
3:00 – 3:20	Debbie Hannula, UC Davis <i>Medial temporal lobe activity related to successful allocentric spatial working memory</i>

**3:20 – 4:20**

**Poster Session 2 (w/ refreshments)**

- Tracy DeBoer (UC Davis)
- Craig Brozinsky (UC Davis)
- Sandrine Duverne (UC Irvine)
- April Hebert (Stanford)
- Adriane Mayda (UC Davis)
- Diane Marian (UC Berkeley)
- Antonio Jaeger (UC Irvine)

**4:20 – 5:20**

**Talk Session 4**

4:20- 4:40

Fenna Krienen, UC Berkeley  
*Cross-modal differences in response inhibition.*

4:40- 5:00

Moriah Thomason, Stanford  
*Development of working memory in the child's brain: evidence from functional magnetic resonance imaging*

5:00- 5:20

Marisa Knight & Mara Mather, UC Santa Cruz  
*Aging and goal-directed emotional attention*

**5:30 –**

**Dinner/Social Event – Alpine Inn**  
3915 Alpine Rd, Portola Valley, CA